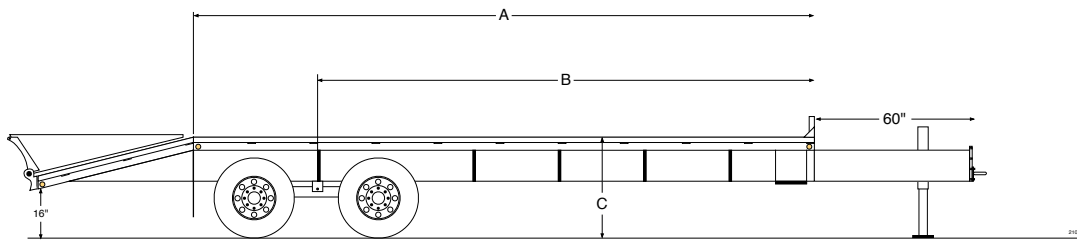


G.V.W.R	23,400#	ELECTRIC PLUG	7-Way RV Style
COUPLER	4-Bolt Adjustable Pintle Ring	PREP	3-Step Acid Washed with Phosphorus Solution
AXLES	Tandem 10,000# Dual Wheel (Oil-Bath)	PRIMER	Dupont Primer
SUSPENSION	Multi-leaf Slipper Spring with Equalizer	PAINT	Dupont Automotive-grade Acrylic Enamel
TIRE	ST235/80R16 (10 ply)	PINSTRIPES	Painted Pinstripes
WHEEL	16 x 6 Dual 8-bolt	OVERALL WIDTH	102" wide (approx)
FRAME	12" I-Beam (19# lbs./ft.)	DECK HEIGHT	Approx. 38" standard
NECK	12" I-Beam (19# lbs./ft.)	BRAKES	Electric brakes on all axles
CROSSMEMBERS	3" Channel on 16" centers	DOVE TAIL	Your choice of 3 different Dove Tail styles
SAFETY CHAINS	3/8" Heavy Duty with Safety Latch Hooks	STEPS	Access Step on driver's side
JACK	12,000# Spring Loaded Drop Leg Jack	STORAGE	Storage Area in A-Frame (Expanded Metal)
SIDE RAILS	5" Angle Iron with Rub Rails	WIRING	Front Mount in conduit
STAKE POCKETS	Formed Stake Pockets on 24" centers	REFLECTIVE TAPE	Required D.O.T. Reflective Taping
FLOOR	2" Pressure Treated Pine	SAFETY	Emergency Breakaway switch & battery backup
LIGHTS	All LED Stop, Tail, Turn and Clearance		All specifications subject to change without notice.

Measurements

when equipped with 5' dove tail



Length	A	B	C
16	132	122"	38"
20	180	154"	38"
22	204	170"	38"
24	228	176"	38"
25	240	176"	38"
26	252	188"	38"
28	276	204"	38"
30	300	220"	38"
32	324	236"	38"
35	360	249"	38"
36	372	280"	38"
40	420	305"	38"
45	480	341"	38"

All measurements are approximate

SUGGESTED RETAIL PRICE

Model	Length	MSRP
210PH-16	16'	\$7,753
210PH-20	20'	\$8,334
210PH-22	22'	\$8,622
210PH-24	24'	\$8,913
210PH-25	25'	\$9,058
210PH-26	26'	\$9,204
210PH-28	28'	\$9,494
210PH-30	30'	\$9,783
210PH-32	32'	\$10,115
210PH-35	35'	\$10,612
210PH-36	36'	\$10,779
210PH-40	40'	\$11,559
210PH-45	45'	\$12,536

DOVE TAIL CHOICES

Dove Tail	Type	Description	MSRP
DT 1	4' ADJUSTABLE includes 2 - 5' Ramps with load-assist legs	Platform can be locked in up or down position	N/C
DT 2	5' SELF-CLEANING includes 2 - 5' spring-assist Ramps with load-assist legs	Full dove tail constructed of angle iron	N/C
		<i>Optional Center Ramp on Self-Cleaning Dove Tail</i>	\$192
DT 3	5' CENTER-LIFT includes 2 - 5' spring-assist Ramps with load-assist legs	Center platform raises automatically (with gas-pressure cylinder) so full dove tail is deck level when ramps are in stored position.	\$192
DT-S	STRAIGHT DECK	No dove tail, no ramps	-\$200

Overall trailer length includes dove tail length

210PH OPTIONS PRICING

Deduct for No Dove Tail and No Ramps	\$200
Disc Brakes (Includes 10K HD)-Must add Elec/Hydraulic Brakes	\$1,700
Electric over Hydraulic Brakes	\$1,760
Front Mount Toolbox with lid (only available with dual jack option)	\$229
Side Mount Toolbox with lid	\$229
Extra Spring Loaded Jack (Dual Jacks)	\$207
2-Speed Jack System (includes 2nd Jack)	\$375
8' Slide-in Ramps (on Straight Deck trailer only - no dove tail)	\$344
Shrinkwrap Electrical Connections	\$76
Pipe Spools (between Stake Pockets)	\$115

Torque Tube (helps minimize trailer twisting)	\$30/ft.
Pierced Beam (Low-Profile Trailer)	\$27/ft.
Metal Floor (3/16" Diamondplate with crossmembers on 12" centers)	\$69/ft.
Spare Wheel	\$92
Spare (Complete Tire & Wheel)	\$245
Paint Underside of Trailer	\$100
Upgrade 10K Heavy Duty axles	\$1,148
Upgrade to 12", 22 lbs. I-Beam	\$15/ft.
Upgrade to 14-ply radial tires	\$69/tire
Weld-on Ratchets	\$61
Ratchet Rail (per 6' length)	\$120/ea