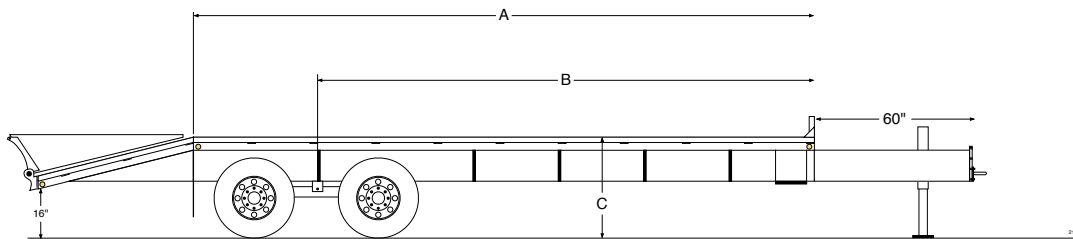


<b>G.V.W.R</b>	25,400#	<b>ELECTRIC PLUG</b>	7-Way RV Style
<b>COUPLER</b>	4-Bolt Adjustable Pintle Ring	<b>PREP</b>	3-Step Acid Washed with Phosphorus Solution
<b>AXLES</b>	Tandem 12,000# Dual Wheel (Oil-Bath)	<b>PRIMER</b>	Dupont Primer
<b>SUSPENSION</b>	Multi-leaf Slipper Spring with Equalizer	<b>PAINT</b>	Dupont Automotive-grade Acrylic Enamel
<b>TIRE</b>	ST235/80R16 (10 ply)	<b>PINSTRIPES</b>	Painted Pinstripes
<b>WHEEL</b>	16 x 6 Dual 8-bolt	<b>OVERALL WIDTH</b>	102" wide (approx)
<b>FRAME</b>	12" I-Beam (19# lbs./ft.)	<b>DECK HEIGHT</b>	Approx. 38" standard
<b>NECK</b>	12" I-Beam (19# lbs./ft.)	<b>BRAKES</b>	Electric brakes on all axles
<b>CROSSMEMBERS</b>	3" Channel on 16" centers	<b>DOVE TAIL</b>	Your choice of 3 different Dove Tail styles
<b>SAFETY CHAINS</b>	3/8" Heavy Duty with Safety Latch Hooks	<b>STEPS</b>	Access Step on driver's side
<b>JACK</b>	12,000# Spring Loaded Drop Leg Jack	<b>STORAGE</b>	Storage Area in A-Frame (Expanded Metal)
<b>SIDE RAILS</b>	5" Angle Iron with Rub Rails	<b>WIRING</b>	Front Mount in conduit
<b>STAKE POCKETS</b>	Formed Stake Pockets on 24" centers	<b>REFLECTIVE TAPE</b>	Required D.O.T. Reflective Taping
<b>FLOOR</b>	2" Pressure Treated Pine	<b>SAFETY</b>	Emergency Breakaway switch & battery backup
<b>LIGHTS</b>	All LED Stop, Tail, Turn and Clearance		All specifications subject to change without notice.

### Measurements

when equipped with 5' dove tail



Length	A	B	C
16	132	122"	38"
20	180	154"	38"
22	204	170"	38"
24	228	176"	38"
25	240	176"	38"
26	252	188"	38"
28	276	204"	38"
30	300	220"	38"
32	324	236"	38"
35	360	249"	38"
36	372	274"	38"
40	420	311"	38"
45	480	347"	38"

All measurements are approximate

### SUGGESTED RETAIL PRICE

Model	Length	MSRP
212PH-16	16'	\$10,199
212PH-20	20'	\$10,781
212PH-22	22'	\$11,069
212PH-24	24'	\$11,360
212PH-25	25'	\$11,505
212PH-26	26'	\$11,651
212PH-28	28'	\$11,941
212PH-30	30'	\$12,230
212PH-32	32'	\$12,562
212PH-35	35'	\$13,059
212PH-36	36'	\$13,226
212PH-40	40'	\$14,006
212PH-45	45'	\$14,983

### DOVE TAIL CHOICES

Dove Tail	Type	Description	MSRP
DT 1	<b>4' ADJUSTABLE</b> includes 2 - 5' Ramps with load-assist legs	Platform can be locked in up or down position	N/C
DT 2	<b>5' SELF-CLEANING</b> includes 2 - 5' spring-assist Ramps with load-assist legs	Full dove tail constructed of angle iron	N/C
		<i>Optional Center Ramp on Self-Cleaning Dove Tail</i>	\$192
DT 3	<b>5' CENTER-LIFT</b> includes 2 - 5' spring-assist Ramps with load-assist legs	Center platform raises automatically (with gas-pressure cylinder) so full dove tail is deck level when ramps are in stored position.	\$192
DT-S	<b>STRAIGHT DECK</b>	No dove tail, no ramps	-\$200

Overall trailer length includes dove tail length

### 212PH OPTIONS PRICING

Deduct for No Dove Tail and No Ramps	\$200
Disc Brakes (Must add Electric over Hydraulic Brakes)	\$2,295
Electric over Hydraulic Brakes	\$1,760
Front Mount Toolbox with lid (only available with dual jack option)	\$229
Side Mount Toolbox with lid	\$229
Extra Spring Loaded Jack (Dual Jacks)	\$207
2-Speed Jack System (includes 2nd Jack)	\$375
8' Slide-in Ramps (on Straight Deck trailer only - no dove tail)	\$344
Shrinkwrap Electrical Connections	\$76

Pipe Spools (between Stake Pockets)	\$115
Torque Tube (helps minimize trailer twisting)	\$30/ft.
Pierced Beam (Low-Profile Trailer)	\$27/ft.
Metal Floor (3/16" Diamondplate with crossmembers on 12" centers)	\$69/ft.
Spare Wheel	\$92
Spare (Complete Tire & Wheel)	\$245
Paint Underside of Trailer	\$100
Upgrade to 12", 22 lbs. I-Beam	\$14/ft.
Upgrade to 14-ply radial tires	\$64/tire
Weld-on Ratchets	\$57
Ratchet Rail (per 6' length)	\$120/ea